



AGIR pour la  
**BIODIVERSITÉ**  
AQUITAINE



Conservatoire  
d'espaces naturels  
**Aquitaine**

# A simplified key of the butterflies of Aquitaine

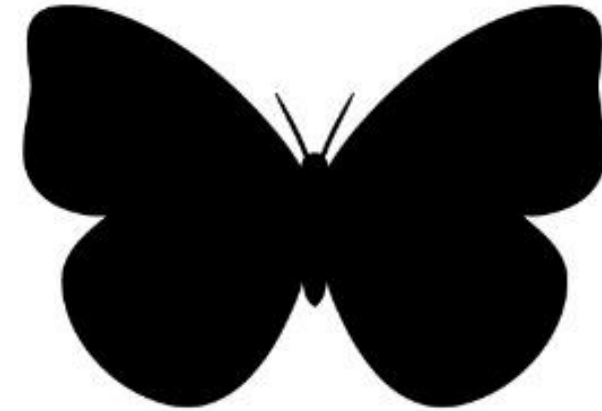
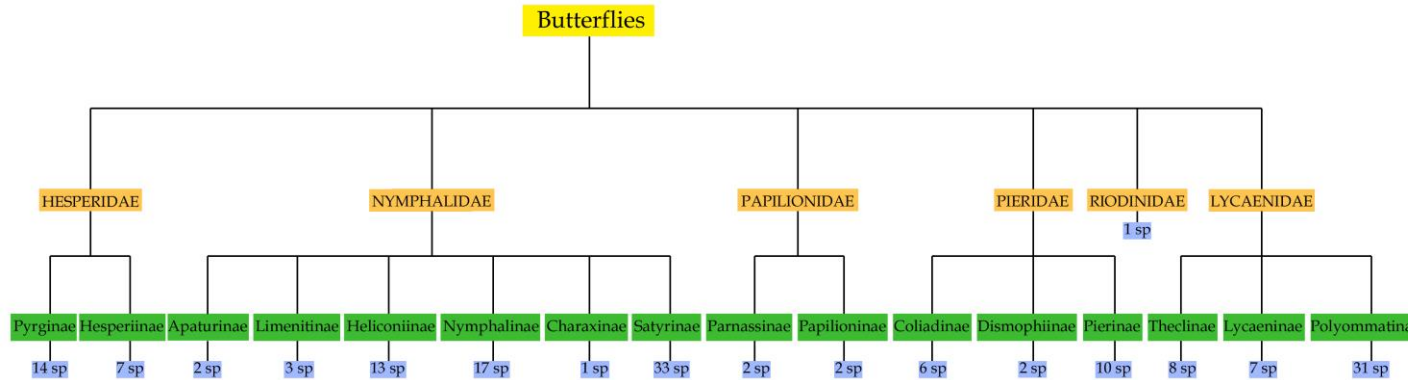
V1



faune-aquitaine.org

# A simplified key to the Butterflies of Aquitaine

Butterflies are distinguished from most moths by their club-ended thread-like antennae, their wings closed together above the body at rest and their absence of a system of coupling between the anterior and posterior wings. Butterflies are active by day, whereas moths generally fly at night. Note that the separation of these two sub-orders has no real scientific basis but remains an accepted convention.

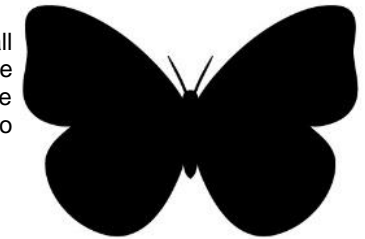


Large : 7-9 cm

Table 1: Butterflies in Aquitaine

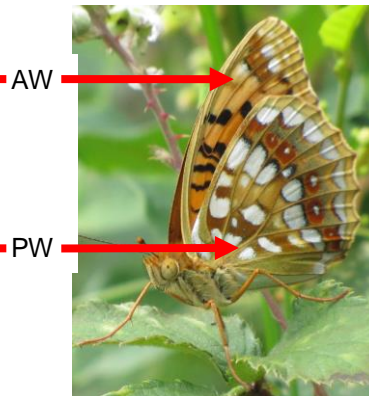
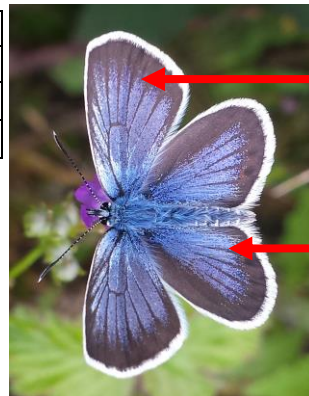
Approximately 159 species of butterflies found in Aquitaine. Knowledge of their geographical distribution is still fragmentary and there are still potentially other species present. The production of this key aims to support recording for the first Aquitaine atlas of butterflies – a joint project by CEN Aquitaine and LPO Aquitaine which will provide an important monitoring baseline.

This key provides a simple way to identify the different species of butterflies in Aquitaine. It has been constructed in such a way as to display all closely related species on each page. It must be remembered that a key such as this cannot provide all of the criteria for confirming the identification of every species. It is intended as a simplified key which for many species should be sufficient though it will sometimes have to be supplemented by reference to other more specialized works as indicated. Distributional information by Department is provided to help you to determine your identifications. Good luck!




Medium : 3-7 cm

AW	<b>Anterior wing</b>
PW	<b>Posterior wing</b>
♂	<b>Male</b>
♀	<b>Female</b>



**GENITALIA**  
Means that validation requires genitalia analysis either in the hand or (most often) later with a voucher specimen.

  
Means that the species is protected and its capture prohibited.



Small : 2-3 cm

# Butterflies



Antennae well separated at their base on the forehead, often robust body, butterflies of small size, wings often open at rest



Antennas close together at their base on the forehead



Butterfly with three pairs of legs

Butterfly with two pairs of legs

Medium to large,  
Mainly white or yellow often with black markings

Small butterfly,  
Upperside of wings brown, orange or blue

PW with tail OR  
AW with translucent margin

Wings without  
translucent margins,  
Without tail,  
Main central spots on forewing  
small and simple

Brown-black and orange  
chequered upperside,  
Underside margin with two  
rows of white spots

Upperside brown, orange or blue



Grizzled skipper



Apollo



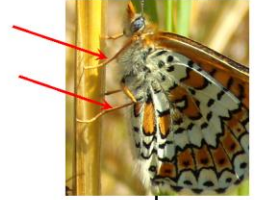
Orange-tip



Duke of Burgundy



Short-tailed blue



Red admiral



Heat fritillary



Speckled wood



Essex skipper



Scarce swallowtail



Clouded yellow



Duke of Burgundy



Sloe hairstreak



Weaver's fritillary

**HESPERIDAE**  
Hesperiinae  
Pyrginae

PAGE 2

**PAPILIONIDAE**  
Parnassinae  
Papilioninae

PAGE 4

**PIERIDAE**  
Coliadinae  
Dismorphiinae  
Pierinae

PAGE 5

**RIODINIDAE**  
Une seule espèce

Duke of Burgundy  
*Hamearis lucina*

localised

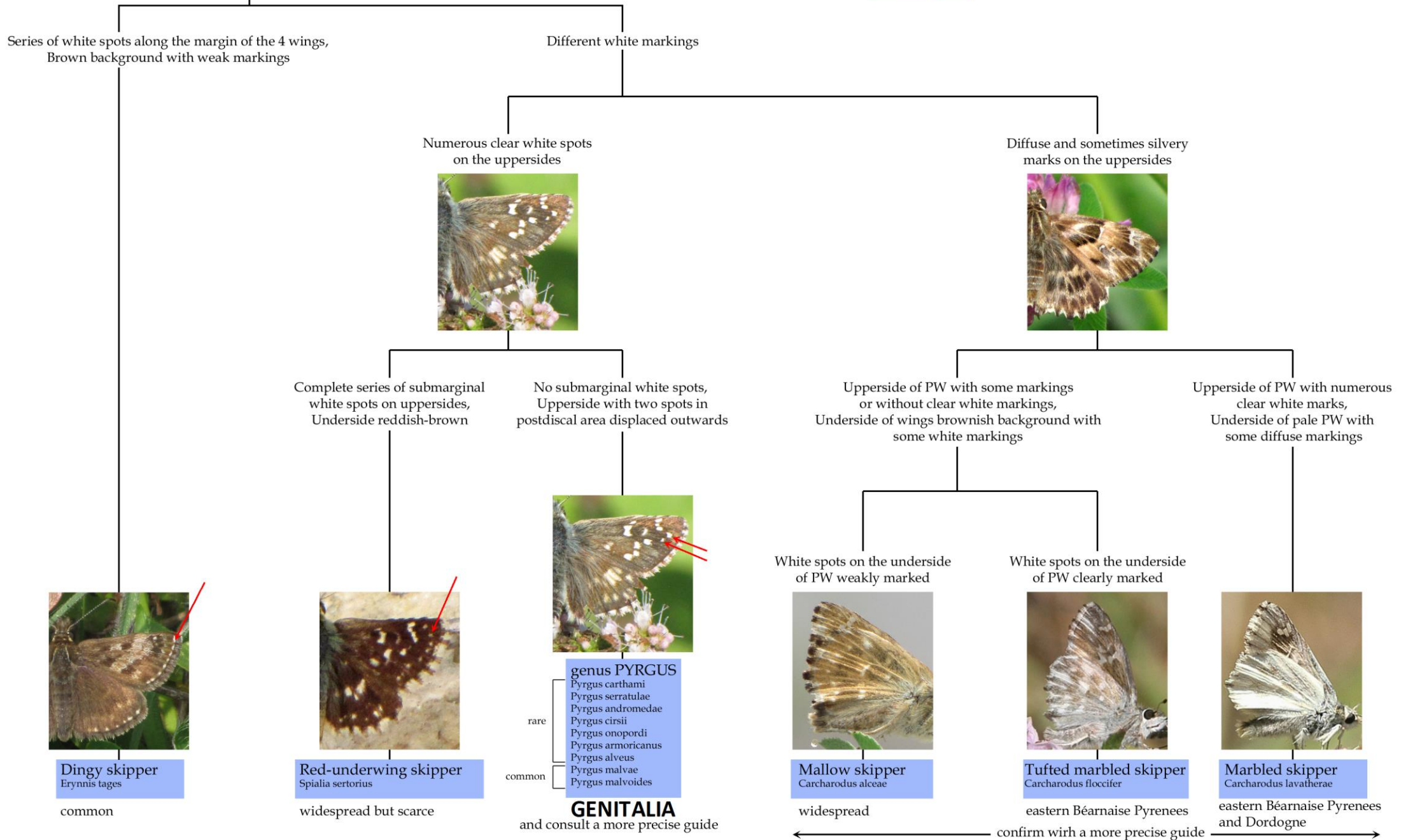
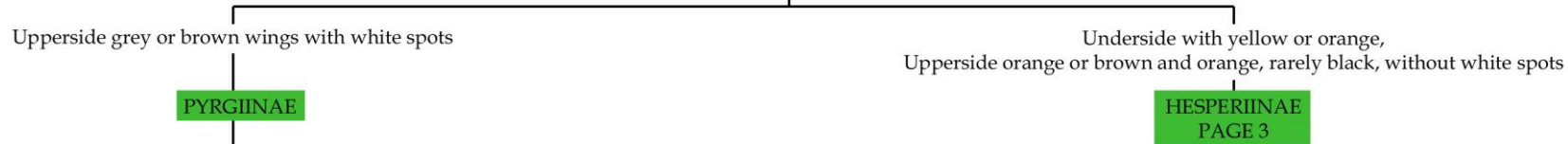
**LYCAENIDAE**  
Theclinae  
Lycaeninae  
Polyommatinae

PAGE 8

**NYMPHALIDAE**  
Limnitiinae  
Heliconiinae  
Nymphalinae  
Charaxinae  
Satyrinae

PAGE 14

# Family of hesperidae



**Dingy skipper**  
*Erynnis tages*

common



**Red-underwing skipper**  
*Spialia sertorius*

widespread but scarce



- genus PYRGUS**  
*Pyrgus carthami*  
*Pyrgus serratulae*  
*Pyrgus andromedae*  
*Pyrgus cirsi*  
*Pyrgus onopordi*  
*Pyrgus armoricanus*  
*Pyrgus alveus*  
*Pyrgus malvae*  
*Pyrgus malvoides*
- rare
- common

**GENITALIA**  
and consult a more precise guide



**Mallow skipper**  
*Carcharodus alceae*

widespread



**Tufted marbled skipper**  
*Carcharodus floccifer*

eastern Béarnaise Pyrenees



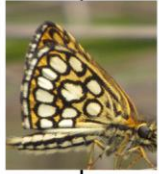
**Marbled skipper**  
*Carcharodus lavatherae*

eastern Béarnaise Pyrenees and Dordogne

confirm with a more precise guide

# hesperiinae

Underside yellow with large white spots edged with black,  
Upperside dark brown or black with white or yellow markings



Underside yellow background,  
Upperside black with some  
small pale marks on the AW



**Large chequered skipper**  
*Heteropterus morpheus*

Underside grey-yellow,  
Upperside chequered brown  
and orange on both wings

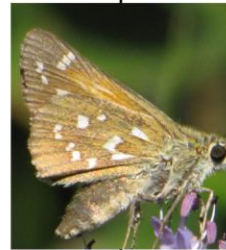


**Chequered skipper**  
*Carterocephalus palaemon*

Underside with some pale spots,  
Upperside with some orange spots



Spots on underside silver-white



**Silver-spotted skipper**  
*Hesperia comma*

scarce

Underside with lighter  
spots less contrasted



**Large skipper**  
*Ochlodes sylvanus*

very common,  
especially clearings  
and woodland edge

Underside brown - orange or with  
some square spots,  
Upperside brown or orange

Underside plain



Orange background color, plain on top and back,  
sometimes with a very narrow black  
band across the forewing



Underside tip of the  
antennae is black,  
Black border of wings diffuse



**Essex skipper**  
*Thymelicus lineola*

very common, meadows

Underside tip of the  
antennae is brown,  
Black border of the wings clear



**Small skipper**  
*Thymelicus sylvestris*

very common, meadows

Upperside brown background  
with pale spots in form  
of an arc-circle towards the edge,  
more visible on the female



**Lulworth skipper**  
*Thymelicus acteon*

Mostly on limestone  
grassland

# Papilionidae

Large black and white butterfly with no 'tails',  
Only high up in the Pyrenees



**PARNASSIINAE**

Large butterfly with white-yellow background and black marks  
with 'tails'



**PAPILIONINAE**

4 well spread out black spots on AW  
2 red spots on PW



**Apollo**  
*Parnassius apollo*



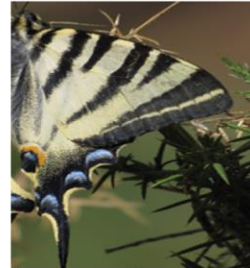
AW: two black spots in the cell,  
Wide border of AW translucent



**Clouded apollon**  
*Parnassius mnemosyne*

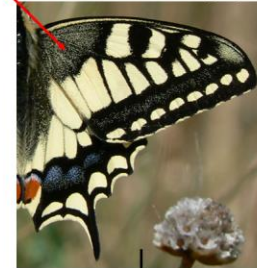


AW: striped black



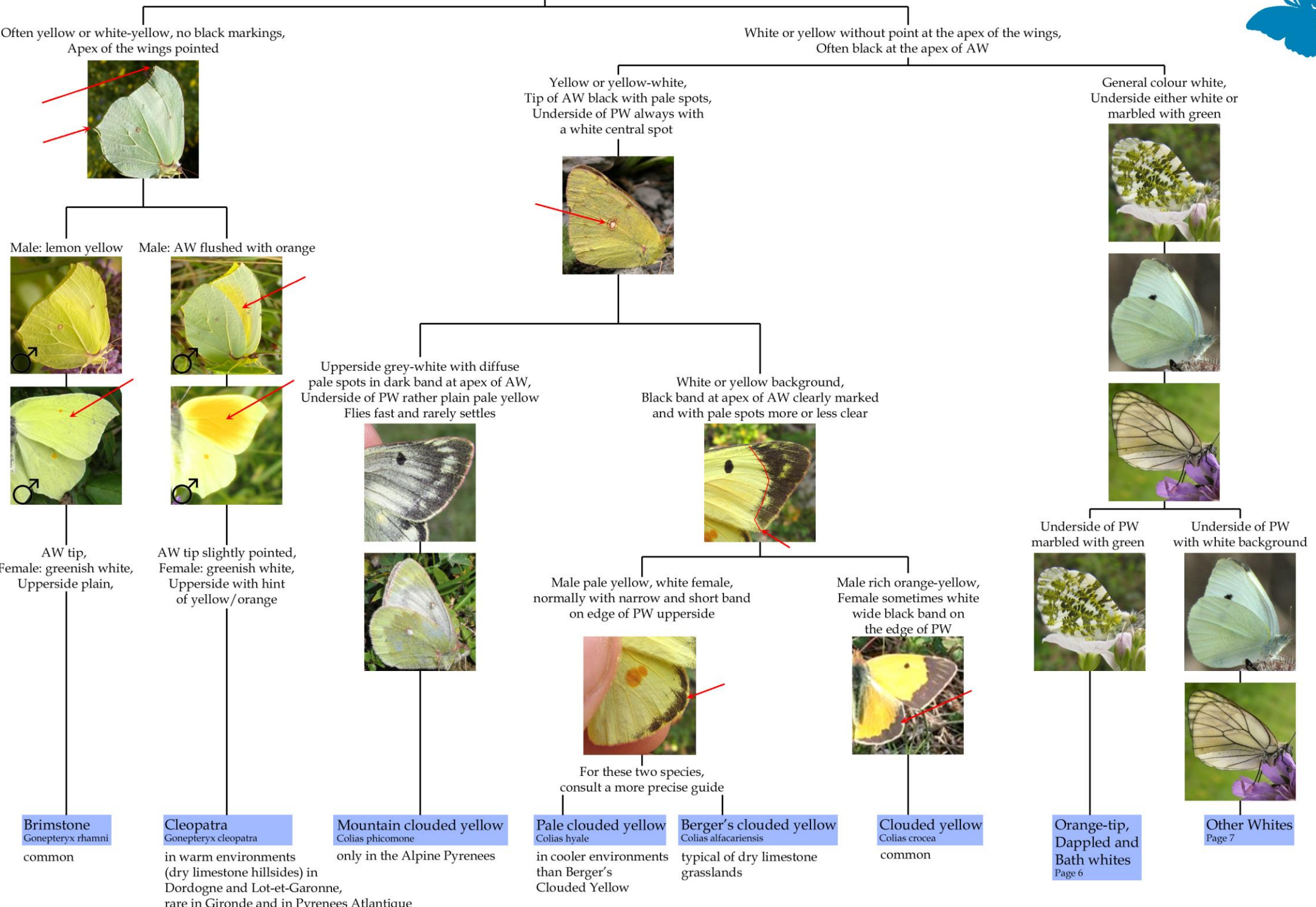
**Scarce swallowtail**  
*Iphiclidides podalirius*

AW: rather chequered black  
Basal area of AW grey



**Swallowtail**  
*Papilio machaon*

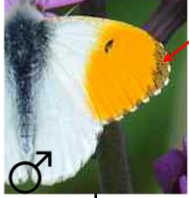
# Pieridae



# Pieridae "marbled"



Male upperside: Outer half of AW orange. PW white,  
 Female upperside: white with apex of the AW with  
 black border with white spots only on the fringe,  
 Underside of PW finely marbled green



White, apex of AW black  
 with white spots



Underside of PW with white spots,  
 Upperside: whole cell spot reaching the wing's leading edge



White spots more or less elongated  
 on the upperside and/or underside



Underside: apex of AW green  
 with contrasting white spots



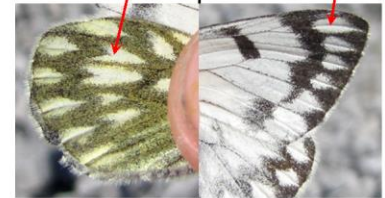
Underside: apex of the AW green  
 with poorly contrasting white spots



Underside of the PW: white marks  
 forming a line,  
 Upperside AW: cell spot cut  
 by white veins



Spear-shaped white spots  
 on the upperside and underside



**Orange-tip**  
*Anthocharis cardamines*  
 common, an early  
 season species

**Western dappled white**  
*Euchloe crameri*  
 very rare

Two difficult species to  
 separate in Pyr. Atlantiques

**Mountain dappled white**  
*Euchloe simplonia*  
 only in the Pyrenees above 400m  
 (usually higher)

**Bath white**  
*Pontia daplidice*  
 uncommon, migratory,  
 can be observed everywhere

**Peak white**  
*Pontia callidice*  
 only in scree and scant grasslands  
 at high altitude in the Pyrenees





# Pieridae "White"

Small-sized. AW much larger than PW,  
Apex very rounded and narrow,  
Upperside white with a single black patch  
at the apex of the AW which  
can be very pale



Larger size,  
Black apical mark different if present

Upperside: apex of AW always black or dark,  
Veins never black but sometimes underlined with gray scales



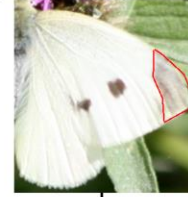
White (often translucent wings)  
with black veins



Large. Upperside: apex of the AW with a large black mark  
in the shape of a boomerang and clearly defined



Medium-sized. AW apex with a black mark generally of  
different shape: square or triangular and often less defined



PW underside white-yellow,  
sometimes slightly shaded grey



PW underside with the veins  
sharply edged with grey



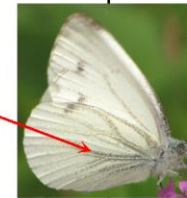
PW yellow underside slightly  
and irregularly shaded grey,  
Underside tip of the AW apex  
with forked vein



PW white-yellow underside  
uniformly grey shaded,  
Underside tip of the AW apex  
with un-forked vein



PW white-yellow underside  
with little (or sometimes no) grey  
shading and only on the veins



AW: Spot larger and blacker than Small White's,  
Female can look rather a small Large White

Summer generation      Spring generation

Réal's wood white  
*Leptidea reali*

Wood white  
*Leptidea sinapis*

**GENITALIA**

Large white  
*Pieris brassicae*

very common

Small white  
*Pieris rapae*

very common  
**GENITALIA** (when in dry stony  
habitats in Dordogne and Lot-et-Garonne)

Southern small white  
*Pieris mannii*

very rare in dry stony limestone grassland:  
only in Dordogne and Lot-et-Garonne  
**GENITALIA**

Green-veined white  
*Pieris napi*

common

Black-veined white  
*Aporia crataegi*

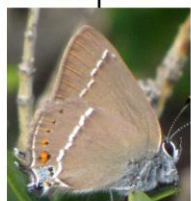
woodland edge, hedges  
with fruit trees/bushes

ATTENTION: "Wood Whites" are  
present throughout Aquitaine but  
the determination of the true  
*Leptidea* species is only possible by  
analysis of *genitalia*

# Lycaenidae



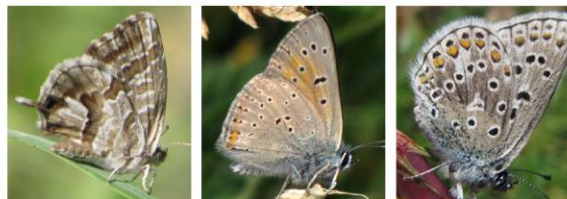
Underside either green or orange with two white lines or brown-grey underside with a white line



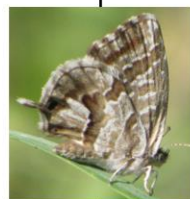
**THECLINAE**

Hairstreaks  
PAGE 9

Undersides different, often with spots



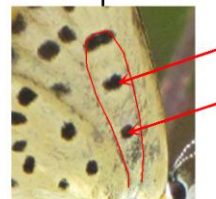
Underside marbled brown, grey and white with a small tail



Geranium bronze  
*Cacyreus marshalli*

Underside with black spots or streaked with white lines

Two black spots in the cell on the underside side of the AW with background often orange



**LYCAENINAE**

Upperside of the AW generally with background orange or partly so



PAGE 10

One or no black spots on the underside side of the AW, with mostly black and orange spots on the underside of the wings, Sometimes simply with white lines, upperside generally blue or brown



**POLYOMMATINAE**

Complete series of orange spots on the underside side of the PW



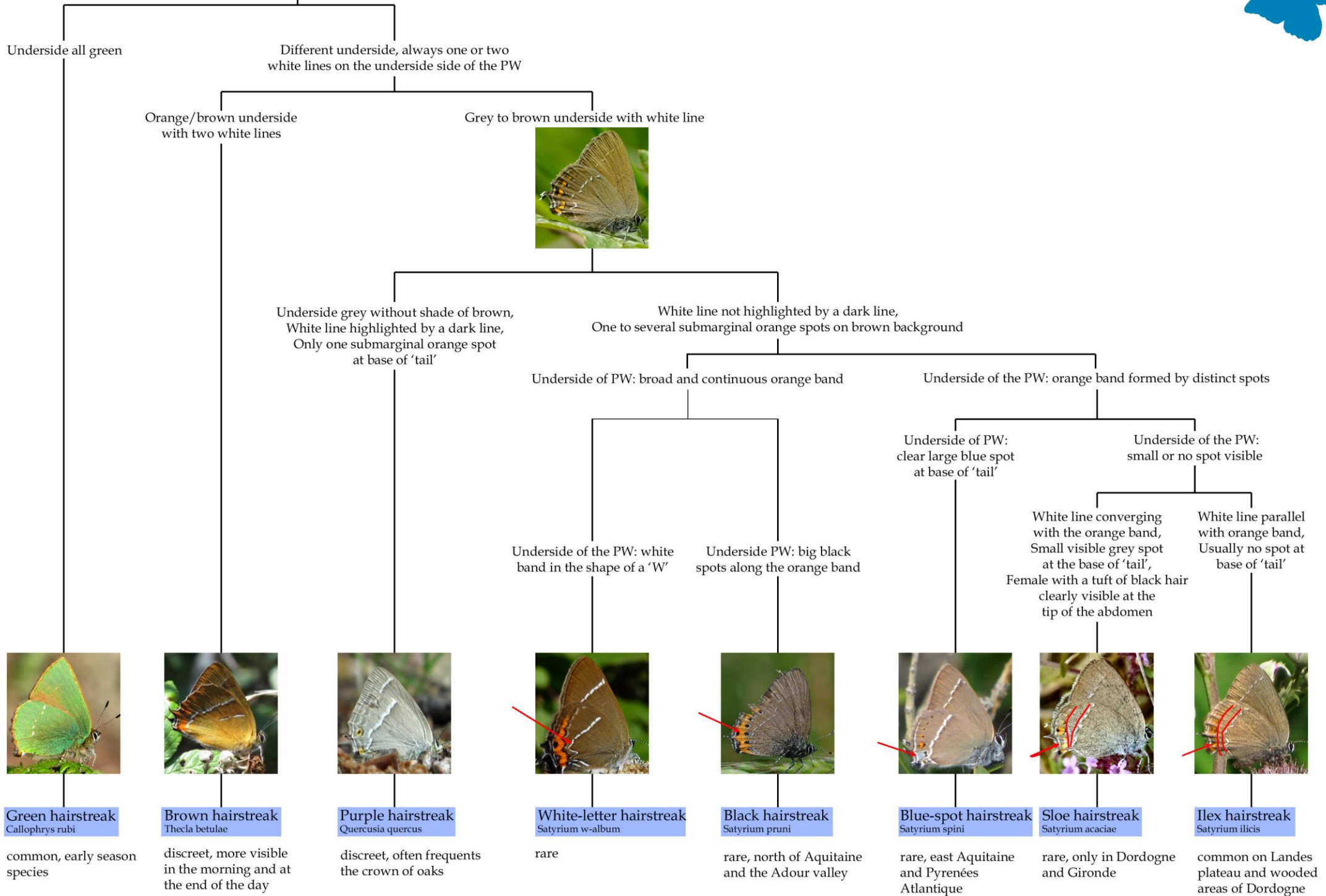
PAGE 11

No orange spots on the underside of PW or only 2-3 or no black spots, just white lines



PAGE 13

# Theclinae



# Lycaeninae

Underside of the PW with a series of white spots

No white spots on the underside side of the PW



Underside of the plain brown PW with faint black spots,  
Presence of a 'tail'



No clear 'tail',  
Underside PW with clear black spots



Underside of the blue-grey PW with  
an orange marginal band,  
Upperside orange in the male,  
more brown and marked in the female



Upperside AW and PW: numerous black  
spots on an orange background,  
Blue suffusion on male body

Underside PW grey/brown  
to grey/yellow

Upperside different and with  
male with no blue suffusion

Underside PW brown  
with orange marginal band,  
Upperside orange (male) or  
brown and orange (female)



Underside PW silvery grey-yellow,  
Upperside brown with darker spots (male)  
or orange on AW and brown  
with orange border on PW (female)



Scarce copper  
*Lycaena virgaureae*  
eastern Béarnaise Pyrenees



Small copper  
*Lycaena phlaeas*  
common



Large copper  
*Lycaena dispar*  
wet meadows



Purple-shot copper  
*Lycaena alciphron*  
plateau Landais,  
eastern béarnaises Pyrenees



Purple-edged copper  
*Lycaena hippothoe*  
eastern Béarnaise Pyrenees



Sooty copper  
*Lycaena tityrus*  
widespread



# Polyommatae with complete series of submarginal orange spots on underside

Cell spot on the underside of the AW\*



No cell spot on the underside of the AW



PAGE 12

White fringes



White fringes chequered with black



Male: plain blue upperside, Fine black border



Male: silvery blue upperside, Wider and grey border



5 orange spots on underside AP



7-8 orange spots on underside AP



Orange spots forming a band, Heavily spotted with black on white background



Orange spots separated, Black spots edged with white

Male upperside sky blue with very narrow dark marginal border



Silvery blue with broad dark marginal border



Female: upperside brown (sometimes blue or partly so)



Female: upperside brown tinted blue



**Common blue**  
*Polyommatus icarus*

common and widespread

\* Form *icarinus* without cellular point (up to 20% of Common Blues!)

**Eros blue**  
*Polyommatus eros*

high Pyrenean grasslands

**Baton blue**  
*Pseudophilotes baton*

dry limestone grasslands in Dordogne, rare in Gironde (plateau Landais)

**Chequered blue**  
*Scolitantides orion*

to search for in Dordogne and Lot-et-Garonne

**Adonis blue**  
*Lysandra bellargus*

**Chalkhill blue**  
*Lysandra coridon*

# Polyommatae with complete series of submarginal orange spots on underside (without cell spot)



No cell spot on the underside of AW



White triangle between the orange band and the series of black spots



No white triangle between the orange band and the series of black spots

Irregular series of black postdiscal spots



Regular series of black postdiscal spots



Underside PW: no silvery-blue shiny scales in black marginal spots

Underside PW: silvery-blue shiny scales in black marginal spots

Large mountain blue with no white marks on underside

Mountain blue with white line on the underside side of PW

Underside both wings: no clear white border between orange spots and margin



Underside both wings: broad white border between orange spots and margin



Male: AW rather narrow black border more or less wide and no spine at the base of the tibia



Underside PW: female with rather large black spots, Male: AW usually large black border + spine at the base of the anterior tibia



Clear row of submarginal orange spots underside of the AW



Diffuse row of submarginal orange spots on the underside of the AW



**Brown argus**  
*Aricia agestis*  
common

**GENITALIA**

(If doubt or worn individual)

(If doubt or worn individual)

**Mountain argus**  
*Aricia montensis*  
eastern Béarnaise Pyr.

**Escher's blue**  
*Polyommatus escheri*  
rare, only Dordogne and Pyr.

**GENITALIA**

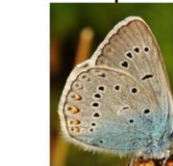
(If doubt or worn individual)

**Chapman's blue**  
*Polyommatus thersites*  
rare, only Dordogne

**GENITALIA**

(If doubt or worn individual)

**Turquoise blue**  
*Polyommatus dorylas*  
Dordogne and Pyrenees



**Amanda's blue**  
*Polyommatus amandus*  
eastern Béarnaise Pyrenees



**Geranium argus**  
*Eumedonia eumedon*  
eastern Béarnaise Pyrenees

Clear row of submarginal orange spots underside of the AW



**Reverdin's blue**  
*Plebejus argyrognomon*  
rare and to search for across Aquitaine

**GENITALIA**

(If doubt or worn individual)

Diffuse row of submarginal orange spots on the underside of the AW



**Idas blue**  
*Plebejus idas*

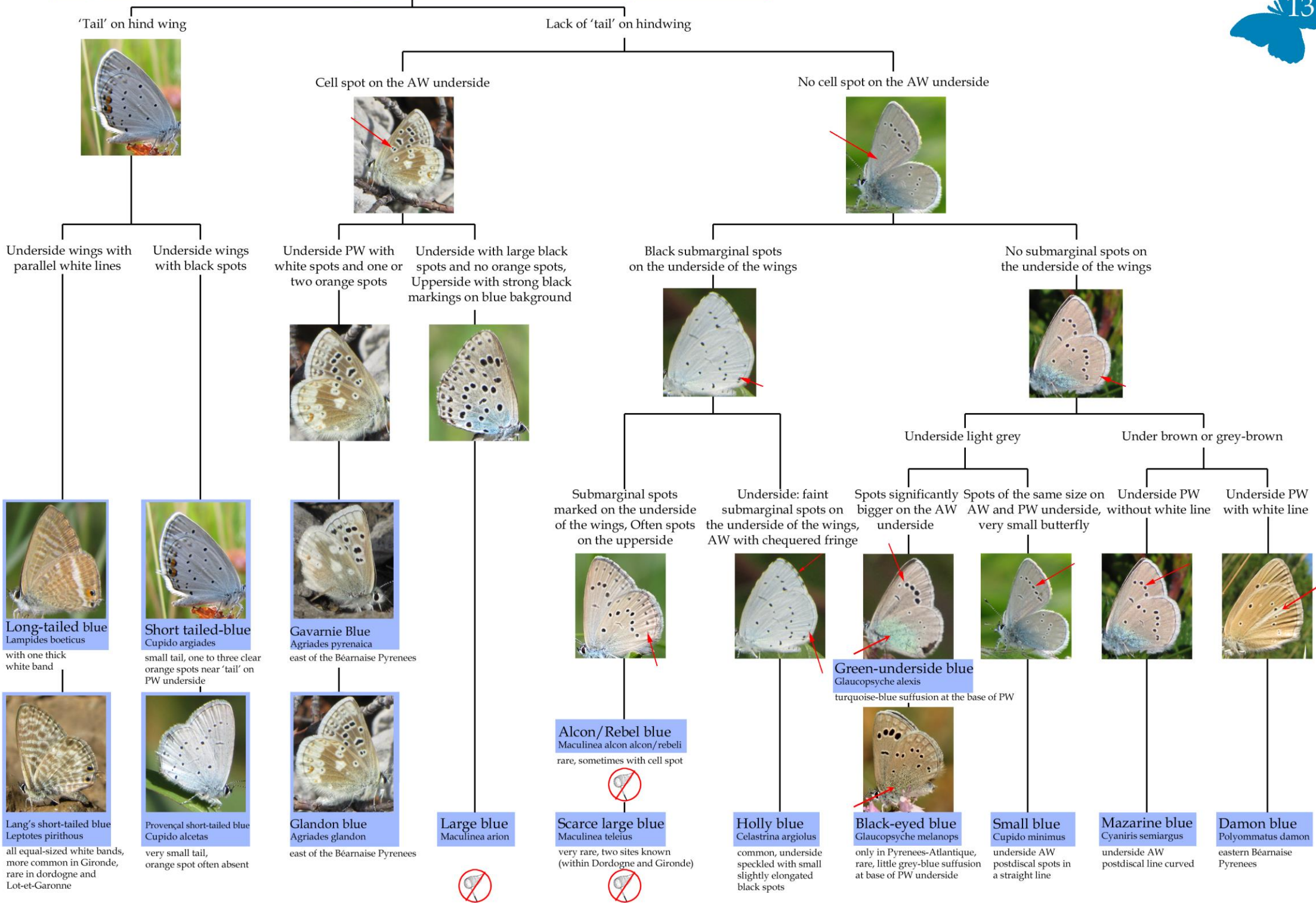
**GENITALIA**

(If doubt or worn individual)

**Silver-studded blue**  
*Plebejus argus*

Additional criteria: consult a more precise guide

# Polyommatae without orange spots on underside or only two to three



# Nymphalidae (nearly half of the Aquitaine species)



Very large, dark brown upperside with orange border, Underside PW with thin wavy lines and a broad white line, 2 long tails on each PW



Charaxinae (one specie)

Two-tailed pasha  
Charaxes jasius

very rare, only one record in Aquitaine (2015)

Other  
Medium to large, Upperside: brown or orangey, Often with metallic blue reflections, with a broad pale band and a large black spot with an orange edge on the PW



Apaturinae  
Page 15

Other  
Medium-sized, Upperside: dark brown sometimes with metallic blue reflections, with a broad white band, No large spot on the PW but one or two sets of black spots on the margins



Limenitinae  
Page 15

Other  
Orange and spotted with black (isolated spots), Reverse often with silvery markings



Heliconiinae,  
Boloria  
Page 16

Other  
Upperside: orange generally chequered with black, without pearly silvery markings



Euphydryas,  
Melitaea  
Page 17

Nymphalinae

Other  
Wings often more or less jagged, Upperside: sometimes the apex of the black AW with white spots, Underside: often dark and/or with pale veins, Never an 'eyed' spot near the apex of the AW



Vanessidea  
Page 18

Other  
Other, Underside: almost always with at least one 'eyed' on the apex of the AW



Satyrinae  
Page 19

Large diverse subfamily



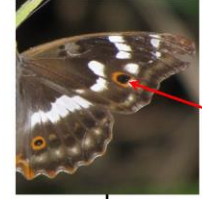
## Apaturinae

Woodland edge and clearings  
Flight includes gliding

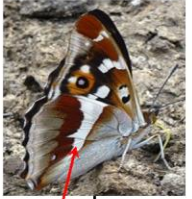
AW upperside:  
no large spot on the AW



AW upperside:  
a large oval spot on the AW



Underside PW with well-defined  
white band including  
tooth-shaped edge



Underside PW with a  
fainter, brownish and  
sinuous band



**Purple emperor**  
*Apatura iris*

rare: notably Dordogne and mountains

**Lesser purple emperor**  
*Apatura ilia*

## Limenitinae

Woodland edge and clearings  
Flyght includes gliding

Upperside with orange lunules along the wing margins



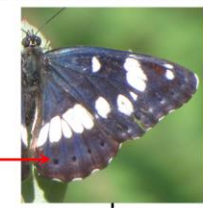
**Popular admiral**  
*Limenitis populi*

very rare: one old record from Dordogne

Upperside dark brown or brown and white,  
sometimes with metallic blue reflections,  
Without orange lunules along the wing margins



Upperside with metallic blue  
reflections in fresh individuals



A single series of black dots towards the  
margins of the wings on both  
upperside and underside



**Southerne white admiral**  
*Limenitis reducta*

Upperside brown and  
white without reflections



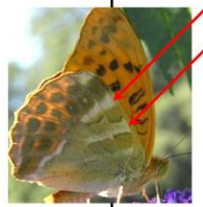
Two parallel sets of black spots  
towards the margins of the wings on  
both upperside and the underside



**White admiral**  
*Limenitis camilla*

# Heliconiinae, Boloria

Large, underside PW with greenish background run through by transverse white lines



Silver-washed fritillary  
*Argynnis paphia*



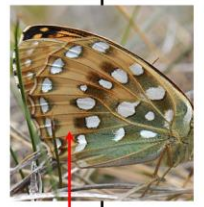
Underside AW background orange, common

Cardinal  
*Argynnis pandora*



Underside AW background pink, very rare Médoc dunes

Large, underside PW with greenish background, Numerous pearly spots, None edged red



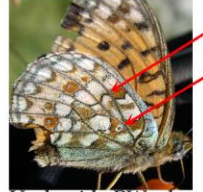
Dark green fritillary  
*Argynnis aglaja*



Large, underside PW with a series of red edged pearly spots, No nuance of violet



Niobe fritillary  
*Argynnis niobe*



Underside PW: clear black veins, One spot in the basal cell, very rare: only Dordogne and Pyrenees Atlantique

Other  
Upperside with round black spots, Margin of AW concave, Underside with large pearly spots



Queen of Spain fritillary  
*Issoria lathonia*



Other  
Underside PW with two parallel sets of black spots towards margin



Twin-spot fritillary  
*Brenthis hecate*



rare

Other  
Underside PW with diffuse dark edged spots and included in a purplish band



Marbled fritillary  
*Brenthis daphne*



Central cell suffused with brown, especially found in Dordogne and Pyr. Atlantique

Lesser marbled fritillary  
*Brenthis ino*



Central cell yellow, rare: only Dordogne and Pyr. Atlantique

Other  
Small, underside PW: a single line of dark spots in the post-discal area

Upperside and underside PW with black spot in basal area

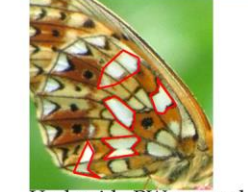


Pearl-bordered fritillary  
*Boloria euphrosyne*



Underside PW: white central cell, rare: only Dordogne and Pyr. Atlantique

Small pearl-bordered fritillary  
*Boloria selene*



Underside PW: several white cells

Other  
Underside PW without black dot in the basal area

Underside purple wash towards margin, Upperside with black spot in the basal area



Weavers's fritillary  
*Boloria dia*



common

Underside PW rather tawny with pearly markings



Shepherd's fritillary  
*Boloria pales*

Montane: 1500-3000m

# Nymphalinae: Euphydrya, Melitaea

Upperside and underside PW: series of black spots in the orange submarginal band or very dark butterfly



PW: generally no black spots in the submarginal band



Upperside: orange-yellow-brown 'stained glass' pattern, Underside: series of black spots in continuous submarginal orange band, PW: dark veins, Basal area rather orange

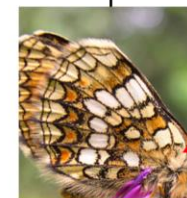
Upperside: orange nuance, Underside: series of dark spots inside the orange submarginal band, sometimes visible on the upperside



Underside PW: pale veins, Basal area white with black spots



Underside PW: dark veins, Basal area with orange spots



For these 3 species, refer to a guide, The observation of *genitalia* allows confirmation of the species, but the place of observation can also be a good indicator

Very dark upperside  
Underside PW: dark veins, White spots bordered with black in the brownish band

PW: series of black spots very visible on upperside and underside  
Underside PW: pale veins, white basal area with black spots

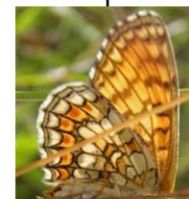
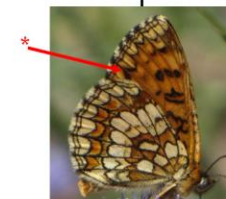
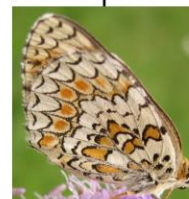
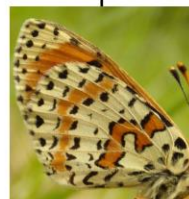
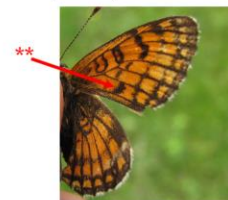
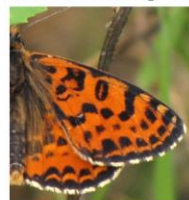
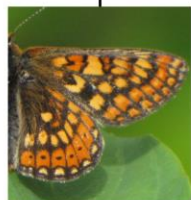
Upperside: scattered black spots,  
Underside PW: 2 broad orange lines and black lines spotted

Upperside: dark veins and variable orange and brown chequered pattern

Upperside orange and brown chequered, Heat fritillary widespread and common especially in clearings and woodland edge

Upperside generally less heavily marked than Heat and Provençal, widespread and common, Especially in meadows

Upperside similar to Knapweed, Underside similar to Heat, Currently only known from Dordogne and Pyrenees Atlantique



Marsh fritillary  
*Euphydryas aurinia*

False heath fritillary  
*Melitaea diamina*  
rare

Glanville fritillary  
*Melitaea cinxia*

Spotted fritillary  
*Melitaea didyma*

Knapweed fritillary  
*Melitaea phoebe*

Heath fritillary  
*Melitaea athalia*  
Fruhstorfer's fritillary  
*Melitaea helvetica*

Meadow fritillary  
*Melitaea parthenoides*

Provençal fritillary  
*Melitaea deione*  
very rare



**GENITALIA**

**GENITALIA**  
(If doubt or worn individual)

**GENITALIA**  
(If doubt or worn individual)

# Vanessidae

Upperside: PW entirely bordered with blue spots



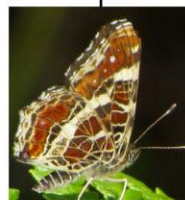
Upperside: PW not bordered by blue spots

Upperside: red background,  
Large multicolored spots on AW,  
Large purplish spots on PW,  
black underside



Different

Small, upperside: chequered  
orange and black (spring)  
or dark brown with broad transverse  
white band (summer),  
Underside dark with  
well-marked pale veins



**Map**  
*Araschnia levana*

Different, medium to large size

Upperside: orange and black  
with apex AW black  
with white spots



AW: upperside salmon pink  
with black markings,  
underside with light veins and  
some yellow-edged blue spots  
towards the margin on PW



**Painted lady**  
*Vanessa cardui*

AW: upperside black  
background with  
a transverse orange band



**Red admiral**  
*Vanessa atalanta*

Upperside: orange with black  
markings, very jagged wing edge,  
Underside brown with a  
white 'comma' on the PW



**Comma**  
*Polygona c-album*

Upperside: chestnut or orange  
wings with black markings



Large,  
Upperside: chestnut  
background, blue border of  
spots present only on the PW,  
AW leading edge with yellow  
markings half the size of black  
markings adjacent



**Large tortoiseshell**  
*Nymphalis polychloros*

Medium-sized,  
Upperside strong orange  
background, border of  
blue spots on both wings,  
AW leading edge with yellow  
markings as large as the black  
markings adjacent



**Small tortoiseshell**  
*Aglais urticae*

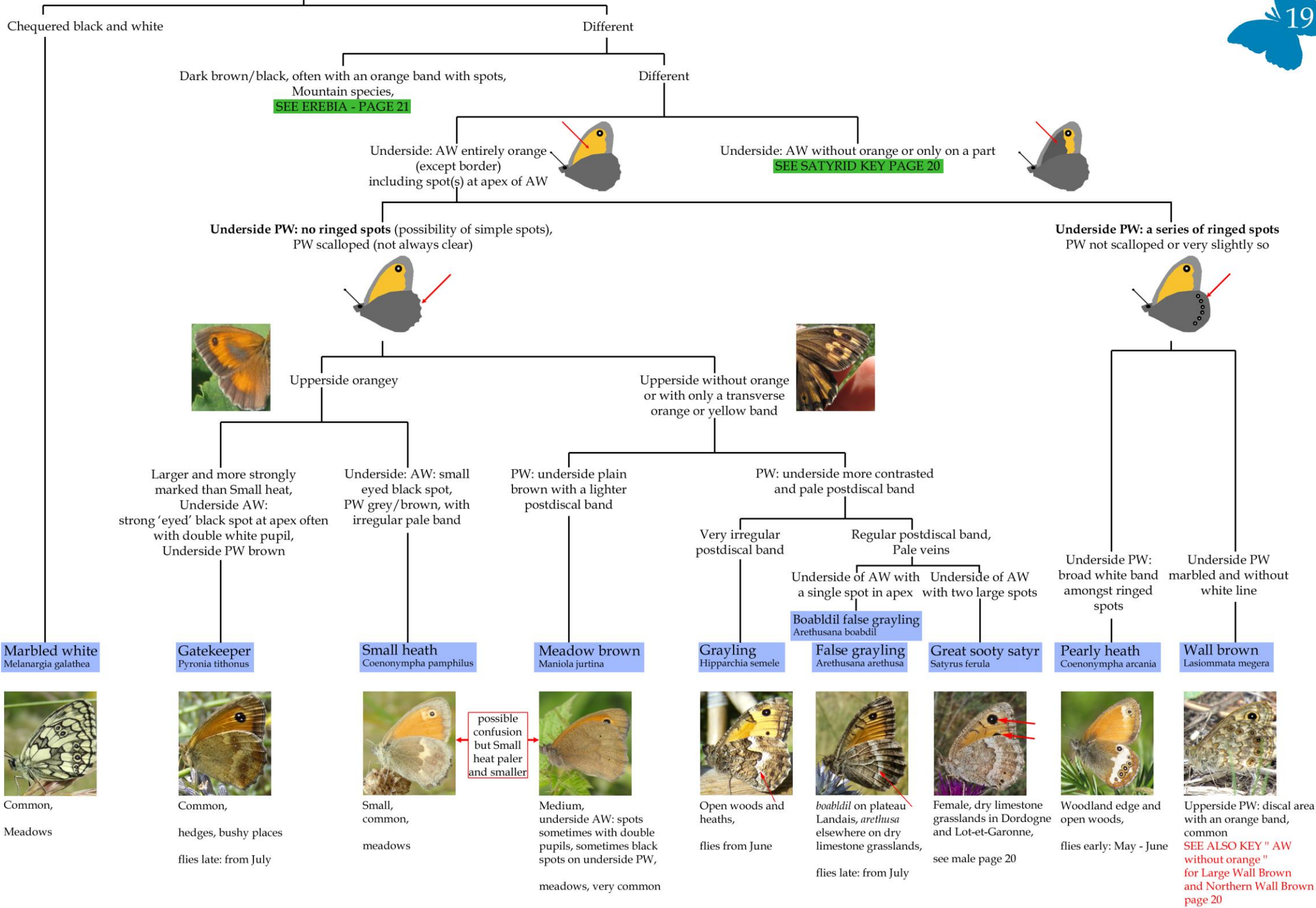
Dark, upperside with  
pale yellow broad border



**Camberwell beauty**  
*Nymphalis antiopa*

Eastern Béarnaise Pyrenees  
elsewhere irregular

# Satyridae

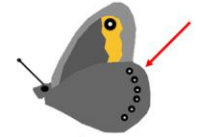
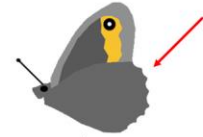


# Satyridae without orange or only on a part on the AW underside



PW: Never spots with pupils on the underside,  
Normally scalloped margin

PW: A series of spots with pupils towards the margin  
on the underside not scalloped or very slightly so



PW underside with a series of white spots, Upperside chequered brown and orange

Upperside traversed by a pale band

PW underside without spots or only 1-2

Upperside plain and dark with the exception of the spots



AW underside: 'eyed' spot in apex within a continuous white-yellow band, Basal and discal areas entirely dark

AW underside: 'eyed' spot in apex within a light patch OR in a pale zone that extends across the wing

Underside background brown PW underside: spots separated

Underside PW marbled



**Speckled wood**  
*Pararge aegeria*



**Woodland grayling**  
*Hipparchia fagi*

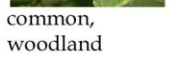


Underside PW with 4 white spots in the post-discal area,  
**GENITALIA**  
2-4 black sticks on Julien organs



**Rock grayling**  
*Hipparchia alcyone*

Underside PW with postdiscal area without white spots,  
**GENITALIA**  
15-20 black sticks on Julien organs, Pyrenees



common, woodland

**Great banded grayling**  
*Brintesia circe*



Large, black and white, PW: underside with white band postdiscal and short discal band

**The hermit**  
*Chazara briseis*



PW: underside with creamy and brown markings in male, rather plain brown in female, very rare (Dordogne only)

**Tree grayling**  
*Hipparchia statilinus*



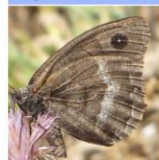
Underside apex AW: 'eyed' spot circled yellow, two white spots between this spot and the next 'eyed' spot below, mainly Landes plateau

**Dryad**  
*Minois dryas*



Large, dark brown, 'eyed' black spot at apex of AW with blue centre

**Great sooty satyr**  
*Satyrus ferula*



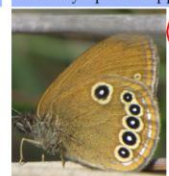
PW slightly scalloped, 'eyed' black spot at apex of AW with white centre, pale line on PW underside, rare, only dry limestone grasslands in Dordogne

**Ringlet**  
*Aphantopus hyperantus*



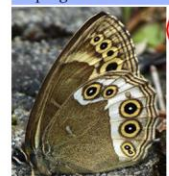
PW underside: two spots displaced inwards, woodland edge and clearings

**False ringlet**  
*Coenonympha oedippus*



PW underside: one silver line between spots and margin, heaths with molinia

**Woodland brown**  
*Lopinga achine*



PW underside: three brown lines between spots and margin, Rare (only 24 and 47)

**Wall brown**  
*Lasiommata megera*



PW upperside discal area with orange band, common

**Large wall brown**  
*Lasiommata maera*



PW upperside discal area brown, Pyrenees and Dordogne

**Northern wall brown**  
*Lasiommata petropolitana*



PW upperside discal area brown with a darker line AND AW never fully orange, eastern Béarnaise Pyrenees

# Satyridae - Erebia (Ringlets): mountain species present only in the Pyrenees Massif



The ringlets are often variable, and can be worn and damaged at the end of the season. This key may be misleading in the field. Refer to a detailed guide to confirm identification



White fringe chequered with black,  
Underside PW with a more or less pale band

Fringe not chequered, underside different



Underside: PW with pale veins

Underside: PW with dark veins

Tiny spots never with pupils

Spots with pupils at least on upperside AW

Very dark,  
Orange band reduced on upperside,  
absent on underside,  
Spots absent on underside

Orange band or patch usually obvious on upperside

Orange band on upperside,  
Similar on underside AW

Little or no orange band upperside,  
Underside of AW with orange band



Underside PW silver-grey



False dewy ringlet  
*Erebia sthenyo*

Underside PW brown

Underside PW with broad alternating light and dark bands

Underside, plainer

Apex of AW: double 'eyed' spot,  
Upperside with metallic reflections

Apex of the AW: 'eyed' spots more numerous,  
Upperside with no reflections,  
Spots on underside of PW

AW with spots within small orange marks

AW with a large orange patch

Underside PW without orange spots

Underside PW with large spots circled with orange

AW upperside: apex with 3 aligned white spots

AW upperside: apex with 2 or 3 white spots not aligned



Large ringlet  
*Erebia euryale*



Gavarnie ringlet  
*Erebia gorgone*



Mountain ringlet  
*Erebia ephron*



Yellow-spotted ringlet  
*Erebia manto*



Lefebvre's ringlet  
*Erebia lefebvrei*



Water ringlet  
*Erebia pronoce*



Silky ringlet  
*Erebia gorge*



Common brassy ringlet  
*Erebia cassioides*



De prunner's ringlet  
*Erebia triarius*



Piedmont ringlet  
*Erebia meolans*



Bright-eyed ringlet  
*Erebia oeme*

Pyrenées brassy ringlet  
*Erebia rondoui*

**GENITALIA**

## Appendix 1 : Summary of recommendations for identification

Vernacular name	Latin Name	View	Photo recommended	Capture recommended	Genitalia recommended
Adonis Blue	<i>Lysandra bellargus</i>	X			
Alcon Blue	<i>Maculinea alcon</i>	X	X	Protected species	Protected species
Alpine Grizzled Skipper	<i>Pyrgus andromedae</i>		X	X	
Amanda's Blue	<i>Polyommatus amandus</i>	X	X		
Apollo	<i>Parnassius apollo</i>	X		Protected species	Protected species
Argus andalou	<i>Aricia montensis</i>		X	X	(between 450 and 1500m)
Bath White complex Pontia	<i>Pontia daplidice</i>	X	X		
Baton Blue	<i>Pseudophilotes baton</i>		X		
Berger's Clouded Yellow	<i>Colias alfacariensis</i>		X	X	
Black Hairstreak	<i>Satyrium pruni</i>	X			
Black-eyed Blue	<i>Glaucopteryx melanops</i>		X	X	
Black-veined White	<i>Aporia crataegi</i>	X			
Blue-spot Hairstreak	<i>Satyrium spini</i>	X	X		
Boabdil's False Grayling	<i>Arethusana boabdil</i>		X		
Bright-eyed Ringlet	<i>Erebia oeme</i>	X	X	X	
Brimstone	<i>Gonepteryx rhamni</i>	X			
Brown Argus	<i>Aricia agestis</i>	X		(between 450 and 1500m)	(between 450 and 1500m)
Brown Hairstreak	<i>Thecla betulae</i>	X			
Camberwell Beauty	<i>Nymphalis antiopa</i>	X			
Cardinal	<i>Argynnis pandora</i>		X		
Chalkhill Blue	<i>Lysandra coridon</i>	X			
Chapman's Blue	<i>Polyommatus thersites</i>		X	X	
Chequered Blue	<i>Scolitantides orion</i>		X		
Chequered Skipper	<i>Carterocephalus palaemon</i>	X			
Cinquefoil Skipper	<i>Pyrgus cirsii</i>		X	X	X
Cleopatra	<i>Gonepteryx cleopatra</i>	X		(females)	
Clouded Apollo	<i>Parnassius mnemosyne</i>	X		Protected species	Protected species
Clouded Yellow	<i>Colias crocea</i>	X			
Comma	<i>Polygonia c-album</i>	X			
Common Blue	<i>Polyommatus icarus</i>	X		(form <i>icarinus</i> )	
Common Brassy Ringlet	<i>Erebia cassioides</i>				X
Damon Blue	<i>Polyommatus damon</i>	X			
Dark Green Fritillary	<i>Argynnis aglaja</i>	X			
de Prunner's Ringlet	<i>Erebia triarius</i>	X	X	X	
Dingy Skipper	<i>Erynnis tages</i>	X			
Dryad	<i>Minois dryas</i>	X			
Duke of Burgundy Fritillary	<i>Hamearis lucina</i>	X			
Eros Blue	<i>Polyommatus eros</i>	X	X	X	
Escher's Blue	<i>Polyommatus escheri</i>		X	X	



Vernacular name	Latin Name	View	Photo recommended	Capture recommended	Genitalia recommended
Essex Skipper	<i>Thymelicus lineola</i>	X	X	X	
False Dewy Ringlet	<i>Erebia sthenno</i>		X	X	
False Grayling	<i>Arethusana arethusa</i>	X	X		
False Heath Fritillary	<i>Melitaea diamina</i>	X		X	
False Ringlet	<i>Coenonympha oedippus</i>	X	X	Protected species	Protected species
Fruhstorfer's Fritillary	<i>Melitaea helvetica</i>				X
Gatekeeper	<i>Pyronia tithonus</i>	X			
Gavarnie Blue	<i>Agriades pyrenaica</i>	X	X	X	
Gavarnie Ringlet	<i>Erebia gorgone</i>		X	X	
Geranium Argus	<i>Eumedonia eumedon</i>		X		
Geranium Bronze	<i>Cacyreus marshalli</i>	X			
Glandon Blue	<i>Agriades glandon</i>	X	X	X	
Glanville Fritillary	<i>Melitaea cinxia</i>	X			
Grayling	<i>Hipparchia semele</i>	X	X	X	
Great Banded Grayling	<i>Brintesia circe</i>	X			
Great Sooty Satyr	<i>Satyrus ferula</i>	X	X		
Green Hairstreak	<i>Callophrys rubi</i>	X			
Green-underside Blue	<i>Glaucoopsyche alexis</i>	X			
Green-veined White	<i>Pieris napi</i>	X			
Grizzled Skipper	<i>Pyrgus malvae</i>				X
Heath Fritillary	<i>Melitaea athalia</i>				X
High Brown Fritillary	<i>Argynnis adippe</i>	X			
Holly Blue	<i>Celastrina argiolus</i>	X			
Idas Blue	<i>Plebejus idas</i>		X	X	(if in doubt)
Ilex Hairstreak	<i>Satyrrium ilicis</i>		X	X	
Knapweed Fritillary	<i>Melitaea phoebe</i>	X			
Lang's Short-tailed Blue	<i>Leptotes pirithous</i>	X			
Large Blue	<i>Maculinea arion</i>	X	X	Protected species	Protected species
Large Chequered Skipper	<i>Heteropterus morpheus</i>	X			
Large Copper	<i>Lycaena dispar</i>	X		Protected species	Protected species
Large Grizzled Skipper	<i>Pyrgus alveus</i>				X
Large Ringlet	<i>Erebia euryale</i>	X	X	X	
Large Skipper	<i>Ochlodes sylvanus</i>	X			
Large Tortoiseshell	<i>Nymphalis polychloros</i>	X			
Large Wall Brown	<i>Lasiommata maera</i>	X			
Large White	<i>Pieris brassicae</i>	X			
Lefèbvre's Ringlet	<i>Erebia lefebvrei</i>	X	X	X	
Lesser Marbled Fritillary	<i>Brenthis ino</i>	X			
Lesser Purple Emperor	<i>Apatura ilia</i>	X	X		
Long-tailed Blue	<i>Lampides boeticus</i>	X			
Lulworth Skipper	<i>Thymelicus acteon</i>	X		X	
Mallow Skipper	<i>Carcharodus alceae</i>	X		X	

Vernacular name	Latin Name	View	Photo recommended	Capture recommended	Genitalia recommended
Map	<i>Araschnia levana</i>	X			
Marbled Fritillary	<i>Brenthis daphne</i>	X			
Marbled Skipper	<i>Carcharodus lavatherae</i>	X	X		
Marbled White	<i>Melanargia galathea</i>	X			
Marsh Fritillary	<i>Euphydryas aurinia</i>	X		Protected species	Protected species
Mazarine Blue	<i>Cyaniris semiargus</i>	X			
Meadow Brown	<i>Maniola jurtina</i>	X			
Meadow Fritillary	<i>Melitaea parthenoides</i>			X	
Mountain Clouded Yellow	<i>Colias phicomone</i>		X	X	
Mountain Dappled White	<i>Euchloe simplonia</i>		X	X	
Mountain Ringlet	<i>Erebia epiphron</i>	X	X	X	
Niobe Fritillary	<i>Argynnis niobe</i>		X	X	
Northern Wall Brown	<i>Lasiommata petropolitana</i>		X		
Oberthür's Grizzled Skipper	<i>Pyrgus armoricanus</i>				X
Olive Skipper	<i>Pyrgus serratulae</i>		X	X	X
Orange-tip	<i>Anthocharis cardamines</i>	X			
Painted Lady	<i>Vanessa cardui</i>	X			
Pale Clouded Yellow	<i>Colias hyale</i>		X	X	
Peacock	<i>Aglais io</i>	X			
Peak White	<i>Pontia callidice</i>	X	X		
Pearl-bordered Fritillary	<i>Boloria euphrosyne</i>	X	X	X	
Pearly Heath	<i>Coenonympha arcania</i>	X			
Piedmont Ringlet	<i>Erebia meolans</i>	X	X	X	
Poplar Admiral	<i>Limnitis populi</i>		X		
Provençal Fritillary	<i>Melitaea deione</i>		X	X	X
Provençal Short-tailed Blue	<i>Cupido alcetas</i>	X			
Purple Emperor	<i>Apatura iris</i>	X	X		
Purple Hairstreak	<i>Quercusia quercus</i>	X			
Purple-edged Copper	<i>Lycaena hippothoe</i>	X			
Purple-shot Copper	<i>Lycaena alciphron</i>	X			
Pyrénées Brassy Ringlet	<i>Erebia rondoui</i>				X
Queen of Spain Fritillary	<i>Issoria lathonia</i>	X			
Real's White	<i>Leptidea reali</i>				X
Red Admiral	<i>Vanessa atalanta</i>	X			
Red-underwing Skipper	<i>Spialia sertorius</i>	X			
Reverdin's Blue	<i>Plebejus argyrognomon</i>		X	X	(if in doubt)
Ringlet	<i>Aphantopus hyperantus</i>	X			
Rock Grayling	<i>Hipparchia alcyone</i>		X	(>500m)	
Rosy Grizzled Skipper	<i>Pyrgus onopordi</i>		X	X	X
Safflower Skipper	<i>Pyrgus carthami</i>		X		
Scarce Copper	<i>Lycaena virgaureae</i>	X			
Scarce Large Blue	<i>Maculinea teleius</i>	X	X	Protected species	Protected species

Vernacular name	Latin Name	View	Photo recommended	Capture recommended	Genitalia recommended
Scarce Swallowtail	<i>Iphiclides podalirius</i>	X			
Shepherd's Fritillary	<i>Boloria pales</i>	X			
Short-tailed Blue	<i>Cupido argiades</i>	X			
Silky Ringlet	<i>Erebia gorge</i>		X	X	
Silver-spotted Skipper	<i>Hesperia comma</i>	X			
Silver-studded Blue	<i>Plebejus argus</i>	X		X	
Silver-washed Fritillary	<i>Argynnis paphia</i>	X			
Sloe Hairstreak	<i>Satyrium acaciae</i>		X	X	
Small Blue	<i>Cupido minimus</i>	X			
Small Copper	<i>Lycaena phlaeas</i>	X			
Small Heath	<i>Coenonympha pamphilus</i>	X			
Small Pearl-bordered Fritillary	<i>Boloria selene</i>	X	X	X	
Small Skipper	<i>Thymelicus sylvestris</i>	X	X	X	
Small Tortoiseshell	<i>Aglais urticae</i>	X			
Small White	<i>Pieris rapae</i>	X		X	
Sooty Copper	<i>Lycaena tityrus</i>	X			
Southern Grizzled Skipper	<i>Pyrgus malvoides</i>				X
Southern Small White	<i>Pieris mannii</i>		X	X	
Southern White Admiral	<i>Limenitis reducta</i>	X			
Speckled Wood	<i>Pararge aegeria</i>	X			
Spotted Fritillary	<i>Melitaea didyma</i>	X			
Swallowtail	<i>Papilio machaon</i>	X			
The Hermit	<i>Chazara briseis</i>		X		
Tree Grayling	<i>Hipparchia statilinus</i>	X	X	X	
Tufted Marbled Skipper	<i>Carcharodus floccifer</i>	X		X	
Turquoise Blue	<i>Polyommatus dorylas</i>	X			
Twin-spot Fritillary	<i>Brenthis hecate</i>	X	X		
Wall Brown	<i>Lasiommata megera</i>	X			
Water Ringlet	<i>Erebia pronoe</i>	X	X	X	
Weaver's Fritillary	<i>Boloria dia</i>	X			
Western Dappled White	<i>Euchloe crameri</i>	(plain)	(>400m)	(>400m)	
White Admiral	<i>Limenitis camilla</i>	X			
White-letter Hairstreak	<i>Satyrium w-album</i>	X			
Wood White	<i>Leptidea sinapis</i>				X
Woodland Brown	<i>Lopinga achine</i>	X	X	Protected species	Protected species
Woodland Grayling	<i>Hipparchia fagi</i>		X	(>500m)	
Yellow-spotted Ringlet	<i>Erebia manto</i>	X	X	X	

## Appendix II: Code of ethics for the prospecting of species in the framework of the Atlas of Butterflies and Burnet Moths of Aquitaine.

**I.** In the collective inventory program, each participant takes the scientific and moral responsibility for the data he/she provides. He/she undertakes to provide only sincere and genuine data, that is to say, which respects the form in which it was collected without modification.

**II.** Collection and capture of species:

**Contributors undertake not to capture or take protected species, except with an ad hoc prefectoral authorization.** For other species, they undertake to **capture only for identification purposes and only as strictly necessary**, i.e. a maximum of 2 individuals of the same complex (or assumed species) per site, any other purpose being contradictory to the ethos of this atlas project. A majority of the species of butterflies and burnets of Aquitaine can be identified by sight or using photography. For species difficult to identify, it is recommended to refer to the pre-atlas species sheets and other guides.

In all cases, contributors agree not to capture in protected or managed areas for biodiversity unless the manager agrees.

**III.** Any data provided must be verified, if necessary, by a recognized expert appointed by the inventory.

**IV.** Those responsible for the inventory are free to refuse contributions which they consider unfounded or which are not freely provided.

**V.** During individual or collective surveys, contributors undertake to respect private property (always request the owner's permission).

**VI.** The above rules apply to any data, in the framework of the Inventory of Butterflies and Burnet Moths of Aquitaine whether it is used for the future atlas or any other published synthesis, or that has been provided previously at any time. These constitute the general rules but may, by collective decision of all interested parties, be adapted on a case-by-case basis.

To participate in furthering our knowledge of butterflies and other wildlife in Aquitaine, 'do the click': I observe, I click!

[www.faune-aquitaine.org](http://www.faune-aquitaine.org)

Or directly on the mobile application: Naturalist



For more information, download the **pre-atlas of rhopaloceres and zygens of Aquitaine** on [www.faune-aquitaine.org](http://www.faune-aquitaine.org) ou sur [www.cen-aquitaine.org](http://www.cen-aquitaine.org)

This key was written by: Mathieu Sannier (LPO Aquitaine)

Translation and editing: David Simpson

Citation: SANNIER M., SIMPSON D. (2017) Simplified key to the Butterflies of Aquitaine – V1, 29 pages. LPO Aquitaine / [www.faune-aquitaine.org](http://www.faune-aquitaine.org)

## Review committee :

Gourvil P-Y, Sannier M, Simpson D, Soulet D, Van Halder I, Couanon V

## Bibliography / resources:

This key has been adapted to the Aquitaine context from the following documents:

LAFRANCHIS T. (2014) Papillons de France, Guide de détermination des papillons diurnes (Rhopalocères, Zygènes et Hétérocères diurnes)

LAFRANCHIS T, JUTZELER D, GUILLOSSON J-Y, KAN B & P (2015) La vie des papillons, Ecologie, Biologie et Comportement des Rhopalocères de France

## Photographs :

Gibbons R, Gourvil P-Y, Pitt D, Sannier M, Simpson D, Soulet D, Van Halder I

**faune-aquitaine.org** : Bargeault L, Bourgeois M, Couanon V, Damian S, Dupuy F, Genoud D, Jelf S, Jourdain B, Luzzato T, Naves A, Pauchet N, Sannier D, Tillo S

**faune-auvergne.org** : Guelin F, Peyrache P, Véron D

**faune-ir.org** : Caminade F, Champion E, Sauvage A

**faune-paca.org** : Alcouffe S, Delorme C, Fievet C, Guillée B, Fortini P